

Repurposed Article:

Masach Technologies is determined to harness the wild territory of Electronics EMI/RFI shields.



Masach wide range of Standard Drawn EMI/RFI Shields

In a fast-paced industry, where custom design products are losing their relevance, standard solutions are required.

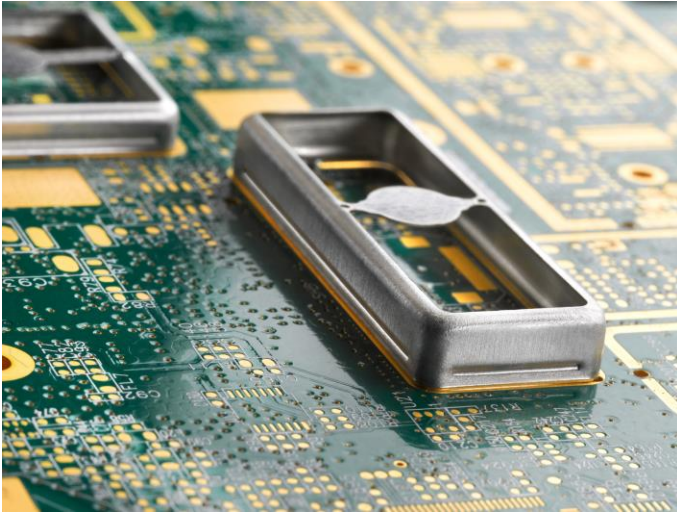
Masach offers a cutting edge, fast and economical approach which holds all the advantages of standards while keeping the flexibility needed to custom design board level shielding.

Leading the EMI/RFI shielding industry with world's largest range of sizes, Masach Technologies offers optimal solutions to meet the electronic industry's ever growing high-frequency and RF applications.

SEE FULL PRODUCT RANGE

[Masach Product range](#)

Masach's seamless protective cage, drawn shields for optimal planarity and robust solid construction which promotes high-shielding effectiveness. The drawn shields are all tooled items that are optimized for small, medium and large-scale runs (SMT compatible).



Masach Seamless Protective Cage, Two-piece Drawn EMI/RFI Shield

Masach Drawn EMI/RFI Shields main advantages:



Seamless protective cage – Promotes high shielding effectiveness

Robust & Solid Construction – Resists warping during transit and handling

Optimal planarity – Promotes high yield on reflow soldering

Two-piece shield Design (Frame & Cover) – Enables users the flexibility to inspect or repair shielded components without having to risk board damage by removing the entire shield or incur any tooling costs.

Masach standard drawn shields provide customers shorter engineering design time, lower product cost and quicker time to market. Online 3D CAD files enable engineers the ability to implement a specific shield instantly. **Professional Engineering sample kits** are available for evaluation.

SEE RELATED PRODUCT

[MS-ENG-KIT21](#)

Starting a new board design?

Check out Masach wide range of **Standard Drawn EMI/RFI shields** for your next design.