

Tape is so 80s

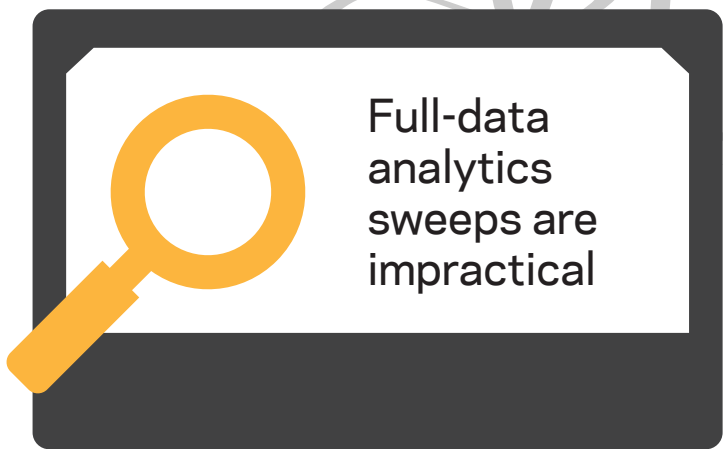
Tape was a great long-term retention/archive device—back in the 80’s! And if you still have some tape hanging around, you know it comes with the same challenges it had back then.

There are compelling reasons to choose on-premises disk to replace those generally outmoded – and outdated – tape drives. These five key considerations are worth noting when it comes to archiving and LTR in the modern data center.



Then

Now

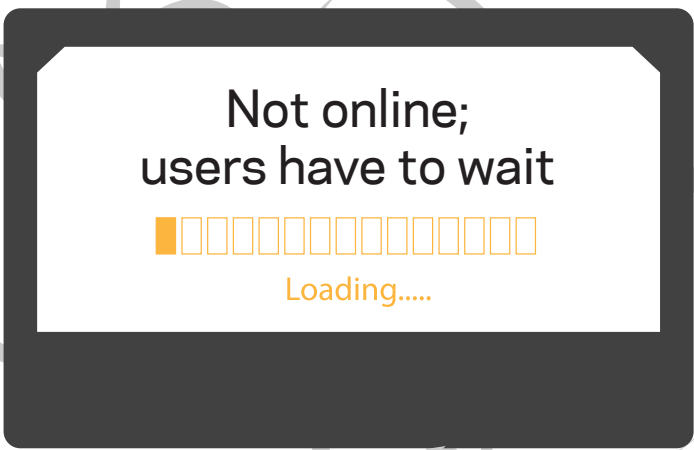


Your data is always available



Your data is available for full-data analytics sweeps

Example: Data classification and analytics applications need access to nearly all of the data in an archive set.



Customers love reduced RTO/RPO

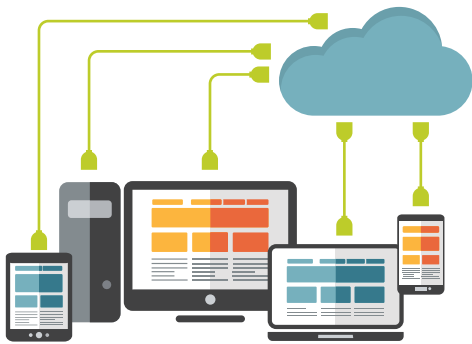


Always online; data immediately available

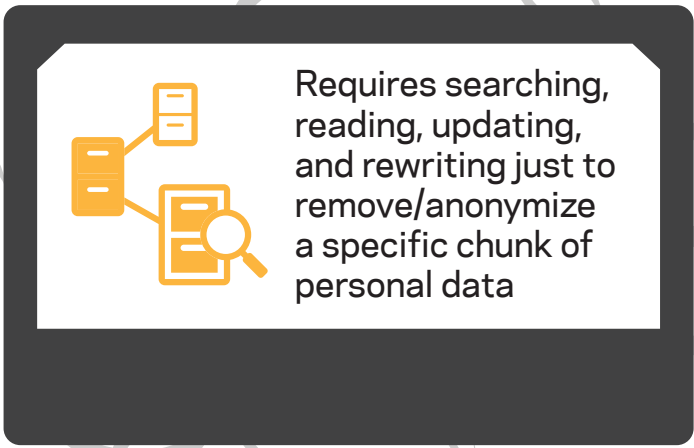
Reduce risks and improve service by responding quickly to users’ recovery requests



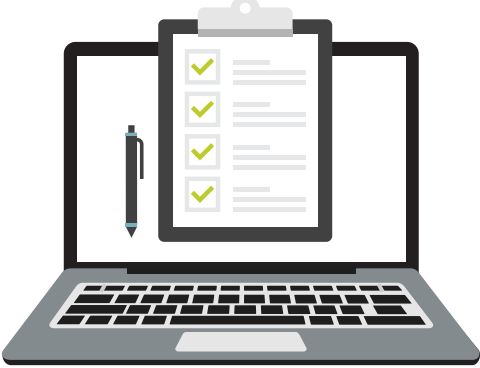
The modern data center is cloud-ready



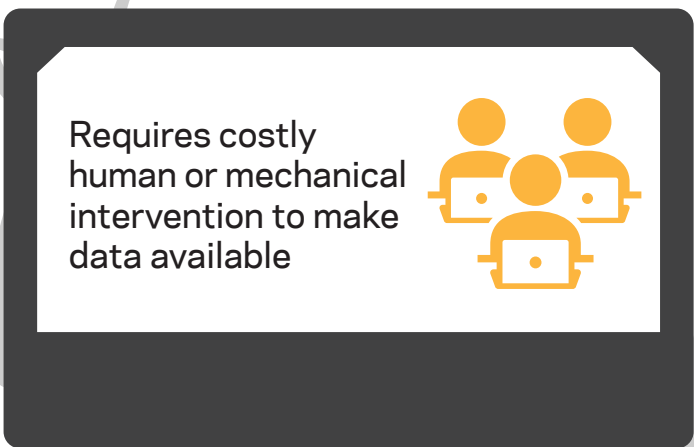
Improve economics and agility by leveraging automated, policy-based tiering to cloud



Regulatory compliance is easier



Regulations like GDPR, which gives data subjects the right to see and control their personal data, are no problem.



You will reduce your OpEx



No substantial operational expenses to keep data immediately accessible (other than power and cooling).